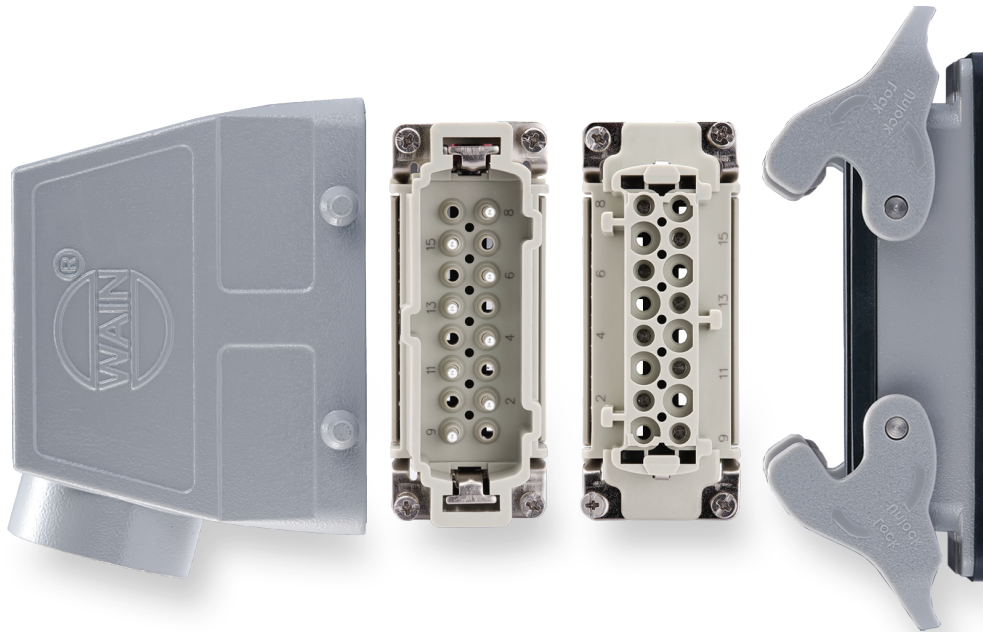


## HVES SERIES

High voltage connector(spring piece connector)

HV  
ES



# HVES SERIES High voltage inserts

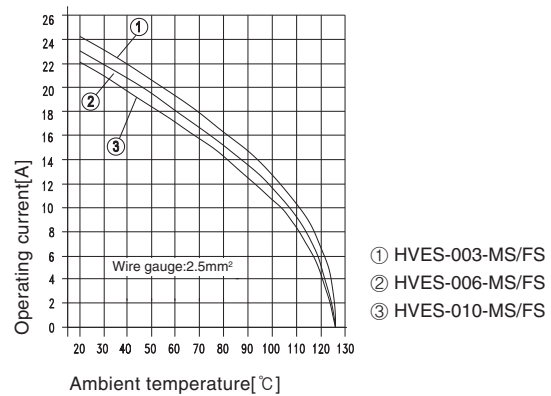
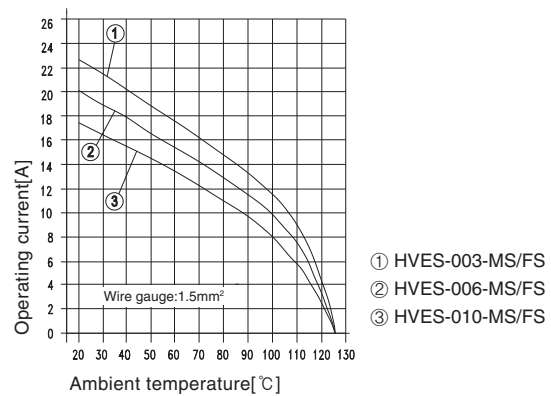
## Technical characteristics

Specifications	DIN EN 60 664 DIN EN 61 984
Approvals	
Inserts	
Number of contacts	3,6,10,12,20+PE + 2 additional contacts for safe high voltage connections
Electrical data acc. to DIN EN 61 984	
-Rated current	16A
-Rated voltage	830V
-Rated impulse voltage	8kV
-Pollution degree	3
-Pollution degree 2 also	16A 1000V 8kV 2
-or	16A 720/1250V 8kV 2
-Relay contacts	16A 500V 6kV 3
Rated voltage acc. to UL/CSA	600V
Relay contacts	250V
Insulation resistance	$\geq 10^{10}\Omega$
Material	polycarbonate
Limiting temperatures	-40°C...+125°C
Flammability acc. to UL 94	V0
Mechanical working life(mating cycles)	$\geq 500$
Contacts	
Material	copper alloy
Surface	hard-silver plated
Contact resistance	$\leq 3m\Omega$
Spring terminal	
-wire gauge	0.14-2.5mm <sup>2</sup>
-AWG	26-14
-Stripping length	7-9mm

## Current carrying capacity

The current carrying is limited by maximum temperature of materials for inserts and contacts including terminals

Control and test procedures according to DIN EN 60512-5



HVE-003 High voltage inserts

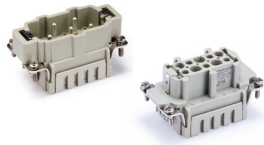
830V 16A 3+2+⊕



Inserts

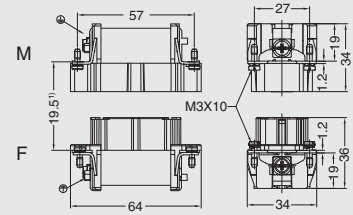
Hoods/Housings: size 10B, detail please find the page 16-25~16-35.

Spring terminal

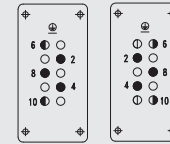


Insert	Designation	Order No.
Male	HVE-003-MS	05100330100
Female	HVE-003-FS	05100330200

1) Distance for contact max. 21 mm



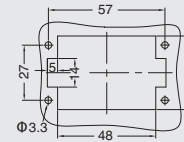
Contact arrangement view from termination side



M

F

Panel cut out for inserts for use without hoods/housings



# HVE-006 High voltage inserts

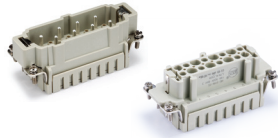
830V 16A 6+2+



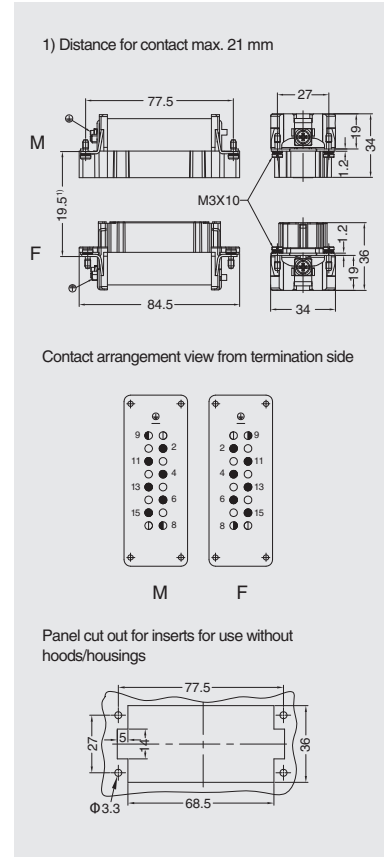
## Inserts

Hoods/Housings: size 16B, detail please find the page 16-42~16-53.

Spring terminal



Insert	Designation	Order No.
Male	HVE-006-MS	05100630100
Female	HVE-006-FS	05100630200



HVE-010 High voltage inserts

830V 16A 10+2+ 

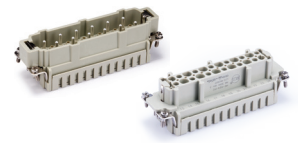


Inserts

Hoods/Housings: size 24B, detail please find the page 16-61~16-73.

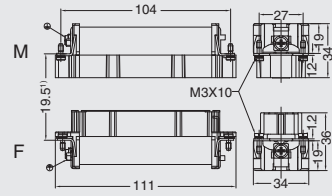
Spring terminal

Insert	Designation	Order No.
Male	HVE-010-MS	05101030100
Female	HVE-010-FS	05101030200

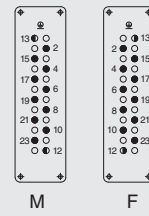


HV  
ES

1) Distance for contact max. 21 mm



Contact arrangement view from termination side



Panel cut out for inserts for use without hoods/housings

