

# HSB SERIES

35A heavy-current connector

HSB



# HSB SERIES Heavy-current inserts

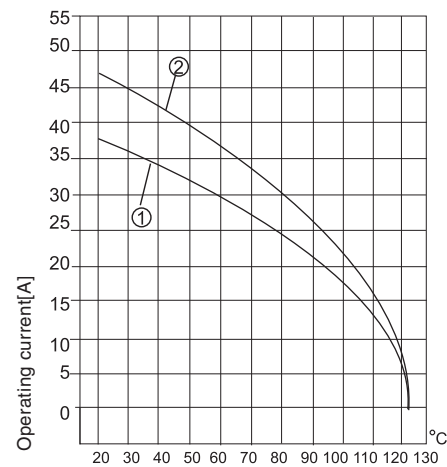
## Technical characteristics

Technical characteristics	DIN EN 60 664 DIN EN 61 984
Approvals	
Inserts	
Number of contacts	6,12+PE
Electrical data acc. to EN 61 984	
-Rated current	35A
-Rated voltage conductor - ground	400V
-Rated voltage conductor - conductor	690V
-Rated impulse voltage	6kV
-Pollution degree	3
-or	35A 500V 6kV 3
Rated voltage acc. to UL/CSA	600V
Insulation resistance	$\geq 10^{10} \Omega$
Material	polycarbonate
Limiting temperatures	-40°C...+125°C
Flammability acc. to UL 94	V0
Mechanical working life(mating cycles)	$\geq 500$
Contacts	
Material	copper alloy
Surface	hard-silver plated
Contact resistance	$\leq 1m\Omega$
Screw terminal	
- Wire gauge	6mm <sup>2</sup>
- AWG	10
- Tightening torque	1.2Nm

## Current carrying capacity

The current carrying is limited by maximum temperature of materials for inserts and contacts including terminals

Control and test procedures according to DIN EN 60512-5



Ambient temperature[ °C]

① wire gauge:4mm<sup>2</sup>

② wire gauge:6mm<sup>2</sup>

HSB-006 Heavy-current inserts

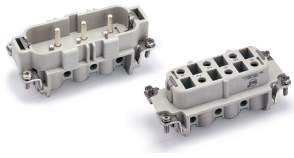
400/690V 35A 6+⊕



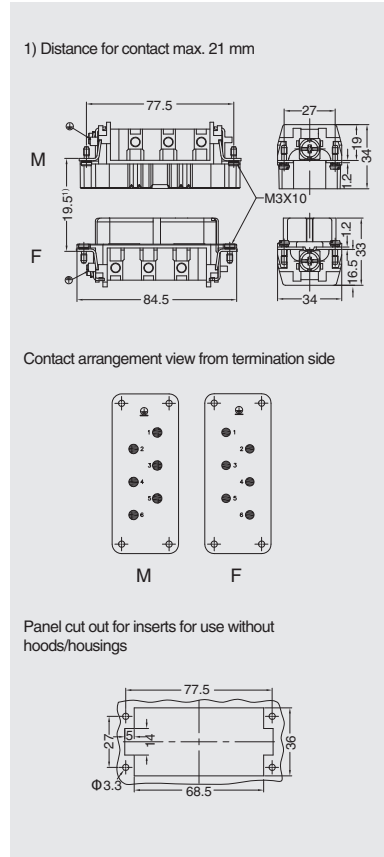
Inserts

Hoods/Housings: size 16B, detail please find the page 16-42~16-53.

Screw terminal



Insert	Designation	Order No.
Male	HSB-006-M	03500620100
Female	HSB-006-F	03500620200



# HSB-012 Heavy-current inserts

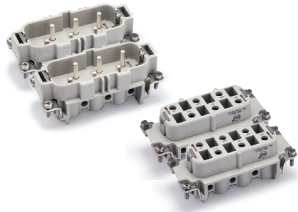
400/690V 35A 12+⚡



## Inserts

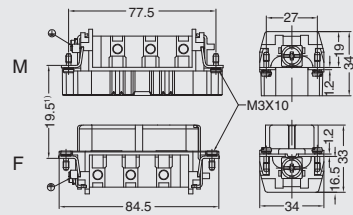
Hoods/Housings: size 32B, detail please find the page 16-81~16-82.

Screw terminal

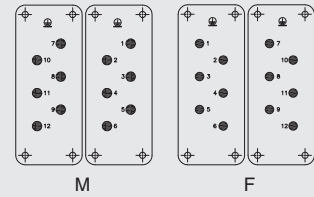


Insert	Designation	Order No.
Male	HSB-006-M	03500620100
	HSB-006-M(7-12)	03500622100
Female	HSB-006-F	03500620200
	HSB-006-F(7-12)	03500622200

1) Distance for contact max. 21 mm



Contact arrangement view from termination side



Panel cut out for inserts for use without hoods/housings

