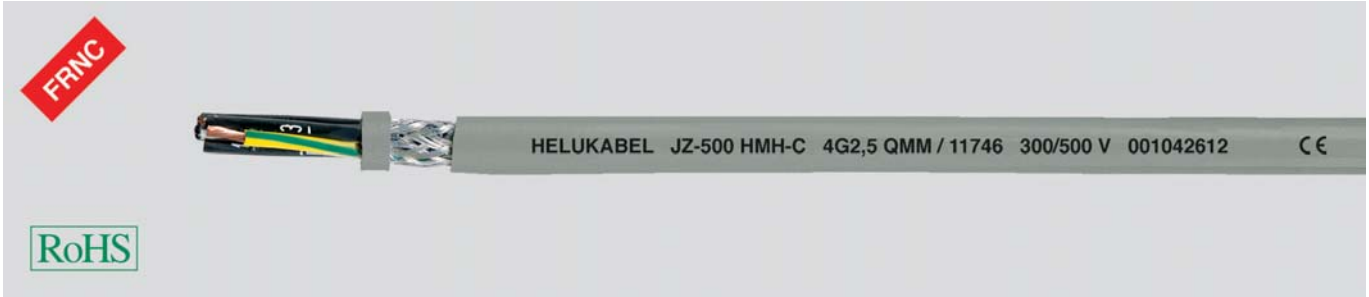


JZ-500 HMM-C flexible control cable, halogen-free, extremely fire resistant, oil resistant, Cu-screened, EMC-preferred type, meter marking



기술사항

- DIN VDE 0281 part 14 및 DIN VDE 0281 part 13규격의 할로겐 불포함 제어 케이블
- 온도범위
이송시 -15°C ~ +70°C
고정 설치시 -40°C ~ +70°C
- 정격전압 U₀/U 300/500V
- 시험전압 2000V
- 최소 곡률 반경
이송시 12.5 x cable ø
고정설치시 4 x cable ø
- 결합저항
max. 250 Ohm/km
- 내방사선 성능
up to 100x10⁶ Cj/kg (up to 100Mrad) 시험

케이블 구조

- 미세 나동 연선, DIN VDE 0295 cl5 및 IEC 60228. cl5
- 할로겐 불포함 화합물 T16의 코아절연, DIN VDE 0281 part 14
- 흑색 코아 외피에 백색 연속 번호 DIN VDE 0293
- 황-녹색 접지선
- 코아 최적 피치로 적층 연선
- 분리층
- 주석도금 구리 편조실드, 실드율 85%
- 할로겐 불포함 쉬스 화합물 TM7, DIN VDE 0281 part 14
- 외피 색상 회색

특징

- 화염검사 DIN VDE 0482 part 266-2-4/BS 4066 part 3/ EN 50266-2/ IEC 60332-3-24 및 DIN VDE 0472 part 804 시험방법 C
- 자체소화성 및 난연성
DIN VDE 0482-332-1-2, DIN EN 60332-1-2, IEC 60332-1 (Conforms to DIN VDE 0472 Part 804 Test method B)
- 연소가스 부식성검사, DIN VDE 0482 part 237/DIN EN 50267-2-2/IEC 60754-2, (DIN VDE 0472 part 813)
- 할로겐 불포함 검사, DIN VDE 0482 part 267/ EN 50267-2-1/ IEC 60754-1 및 DIN VDE 0472 part 815
- 연기농도시험, DIN VDE 0482 part 1034-1+2/IEC 61034-1+2/DIN EN 61034-1+2/BS 7622 part 1+2 (VDE 0472 part 816)

용도

- 할로겐 불포함 난연 케이블은 기계가공, 컨베이어벨트, 생산라인 및 공장 설비, 공조 설비 및 제강공정에서 계측 및 제어용 케이블로 사용한다.
- 비 고정 또는 고정설치용, 외부의 힘을 받아 움직이는 경우가 아니고 중간급 정도의 변형력이 있어도 인장력이 가해지지 않는 움직임이 있는 설치용으로 사용함.
- 건습환경과 선회 상부, 내부, 하부 및 콘크리트 벽체, 벽돌에도 사용할 수 있으나 콘크리트 내부에 묻거나 압축콘크리트에는 적합하지 않음.
- 실드율이 높아 외부 간섭 없이 신호와 펄스를 전송할 수 있음.
주의 : EMC 특성을 최대화하기 위해서는 양단 실드선을 넓게 감싸서 연결시킬 것
- CE = The product is conformed with the EC Low-Voltage Directive 2006/95/EG

Part No.	No. cores x cross-sec. mm ²	Outer ø ca. mm	Cop. weight kg / km	Weight ca. kg / km	AWG-No.
11656	2 x 0,5	5,7	32,1	46,0	20
11657	3 G 0,5	6,0	39,2	56,0	20
11342	3 x 0,5	6,0	39,2	56,0	20
11658	4 G 0,5	6,5	46,1	62,0	20
11343	4 x 0,5	6,5	46,1	62,0	20
11659	5 G 0,5	7,0	52,1	75,0	20
11660	7 G 0,5	7,9	68,3	98,0	20
11663	12 G 0,5	9,6	117,0	158,0	20
11665	18 G 0,5	11,2	156,2	216,0	20
11667	25 G 0,5	13,4	205,5	315,0	20

Part No.	No. cores x cross-sec. mm ²	Outer ø ca. mm	Cop. weight kg / km	Weight ca. kg / km	AWG-No.
11678	2 x 0,75	6,1	39,3	60,0	18
11679	3 G 0,75	6,4	49,4	68,0	18
11344	3 x 0,75	6,4	49,4	68,0	18
11680	4 G 0,75	6,9	57,2	78,0	18
11345	4 x 0,75	6,9	57,2	78,0	18
11681	5 G 0,75	7,4	69,0	95,0	18
11346	5 x 0,75	7,4	69,0	95,0	18
11682	7 G 0,75	8,6	87,1	130,0	18
11347	7 x 0,75	8,6	87,1	130,0	18
11685	12 G 0,75	10,4	151,2	203,0	18
11687	18 G 0,75	12,4	207,5	290,0	18

Dimensions and specifications may be changed without prior notice.

Continuation ▶

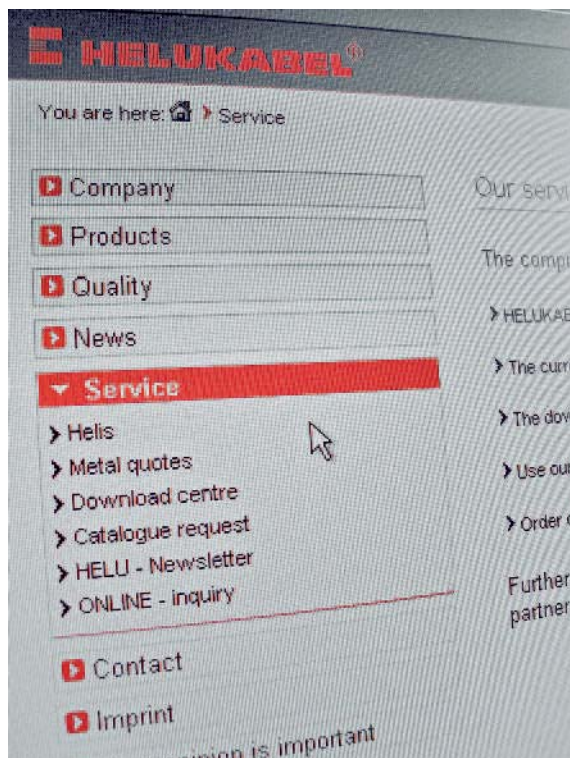
JZ-500 HMH-C flexible control cable, halogen-free, extremely fire resistant, oil resistant, Cu-screened, EMC-preferred type, meter marking



Part No.	No. cores x cross-sec. mm ²	Outer ø ca. mm	Cop. weight kg / km	Weight ca. kg / km	AWG-No.
11689	25 G 0,75	14,8	275,8	413,0	18
11700	2 x 1	6,4	46,3	66,0	17
11701	3 G 1	6,7	56,4	80,0	17
11348	3 x 1	6,7	56,4	80,0	17
11702	4 G 1	7,3	69,7	100,0	17
11349	4 x 1	7,3	69,7	100,0	17
11703	5 G 1	7,8	85,4	130,0	17
11704	7 G 1	9,1	107,3	160,0	17
11707	12 G 1	11,2	187,0	260,0	17
11709	18 G 1	13,2	253,5	382,0	17
11711	25 G 1	15,8	342,6	540,0	17
11722	2 x 1,5	6,6	63,3	88,0	16
11723	3 G 1,5	6,9	76,2	100,0	16
11350	3 x 1,5	6,9	76,2	100,0	16
11724	4 G 1,5	7,5	96,2	125,0	16
11725	5 G 1,5	8,4	111,5	158,0	16
11726	7 G 1,5	10,0	148,0	210,0	16
11729	12 G 1,5	12,1	254,5	340,0	16
11731	18 G 1,5	14,6	367,7	480,0	16
11733	25 G 1,5	17,6	492,4	702,0	16
11744	2 x 2,5	8,3	96,4	132,0	14
11745	3 G 2,5	9,0	148,5	168,0	14
11746	4 G 2,5	9,8	174,2	195,0	14
11747	5 G 2,5	10,9	200,8	222,0	14
11748	7 G 2,5	12,9	235,6	345,0	14
11751	12 G 2,5	15,9	441,0	572,0	14
11766	2 x 4	9,8	135,5	184,0	12
11768	3 G 4	10,6	178,1	238,0	12
11769	4 G 4	11,5	220,3	305,0	12
11770	5 G 4	12,7	328,0	388,0	12
11771	7 G 4	14,0	355,2	504,0	12
11781	2 G 6	11,5	175,3	270,0	10
11782	3 G 6	12,4	240,0	328,0	10
11783	4 G 6	13,8	305,7	416,0	10
11784	5 G 6	15,7	441,8	510,0	10
11785	7 G 6	16,6	506,0	670,0	10

Part No.	No. cores x cross-sec. mm ²	Outer ø ca. mm	Cop. weight kg / km	Weight ca. kg / km	AWG-No.
11786	2 x 10	14,9	265,2	420,0	8
11787	3 G 10	15,9	370,5	495,0	8
11788	4 G 10	17,8	486,0	785,0	8
11789	5 G 10	19,6	611,2	855,0	8
11790	7 G 10	21,6	820,5	1308,0	8
11793	4 G 16	20,8	810,2	882,0	6
11794	5 G 16	22,9	1050,7	1293,0	6
11812	7 G 16	25,0	1183,0	2149,0	6
11795	3 G 25	23,2	792,0	1432,0	4
11796	4 G 25	26,2	1280,0	1911,0	4
11797	5 G 25	29,4	1440,0	2414,0	4
11798	3 G 35	25,7	1110,0	1914,0	2
11799	4 G 35	30,4	1690,0	2542,0	2
11800	5 G 35	33,8	1930,0	3180,0	2
11801	3 G 50	30,0	1584,0	3080,0	1
11802	4 G 50	34,6	2315,0	3550,0	1
11803	5 G 50	38,8	2694,0	4753,0	1
11804	3 G 70	37,6	2218,0	3840,0	2/0
11805	4 G 70	41,3	3020,0	4939,0	2/0
11806	5 G 70	46,1	3696,0	6572,0	2/0
11807	3 G 95	41,2	3010,0	5651,0	3/0
11808	4 G 95	46,2	4013,0	6690,0	3/0
11809	5 G 95	51,2	5016,0	8370,0	3/0
11810	3 G 120	46,5	3802,0	6342,0	4/0
11811	4 G 120	51,0	5067,0	8453,0	4/0

Dimensions and specifications may be changed without prior notice.



Our Service on the Internet:

Service

Through our service area, you will reach HELIS, the HELUKABEL Information System. Here you can find out the most important metal prices, receive important documents in the Download Centre, request documents and the newsletter.

www.helukabel.de